

# Ag Report

In cooperation with

Mississippi Department of  
Agriculture and Commerce

Phone: 601-965-4575  
Facsimile: 601-965-5622  
[www.nass.usda.gov/ms/](http://www.nass.usda.gov/ms/)  
[nass-ms@nass.usda.gov/](mailto:nass-ms@nass.usda.gov/)

Volume 10-06

Released: March 10, 2010

## Featured Statistics:

Licensed Dairy Herds .....	2
Sorghum County Estimates .....	3
Catfish Imports and Exports .....	3
Soybean County Estimates .....	4
Top Ten Soybean Producing Counties .....	5
Cattle and Hog Prices .....	6
Chickens and Eggs.....	7
Commercial Red Meat.....	8

## Highlights

- Mississippi milk cows produced 13,889 pounds of milk per cow in 2009, down 5 percent from 2008.
- Cattle farmers in the state received an average price of \$90.70 per hundredweight for calves in 2009, down \$3.60 from a year earlier.
- Bolivar County was the top soybean producing county in Mississippi during 2009, with production of 10,080,000 bushels.

Milk Cows and Production, by Selected States and United States, 2008-2009

State	Milk Cows <sup>1</sup>		Milk Per Cow <sup>2</sup>		Milk Production <sup>2</sup>	
	2008	2009	2008	2009	2008	2009
	1,000 Head		Pounds		Million Pounds	
Alabama	12	11	15,333	14,909	184	164
California	1,844	1,796	22,344	22,000	41,203	39,512
Florida	120	115	17,167	18,061	2,060	2,077
Georgia	76	75	17,829	18,600	1,355	1,395
Illinois	102	102	18,569	18,873	1,894	1,925
Louisiana	26	23	12,269	11,870	319	273
<b>Mississippi</b>	<b>20</b>	<b>18</b>	<b>14,550</b>	<b>13,889</b>	<b>291</b>	<b>250</b>
Missouri	110	107	14,682	14,654	1,615	1,568
North Carolina	47	45	18,979	19,644	892	884
Oklahoma	64	59	16,578	16,983	1,061	1,002
South Dakota	90	94	19,956	20,128	1,796	1,892
Tennessee	59	56	16,068	16,232	948	909
Texas	418	423	20,134	20,898	8,416	8,840
Virginia	98	96	17,612	18,083	1,726	1,736
United States	9,315	9,201	20,395	20,576	189,982	189,320

<sup>1</sup> Average number during year, excluding heifers not yet fresh.

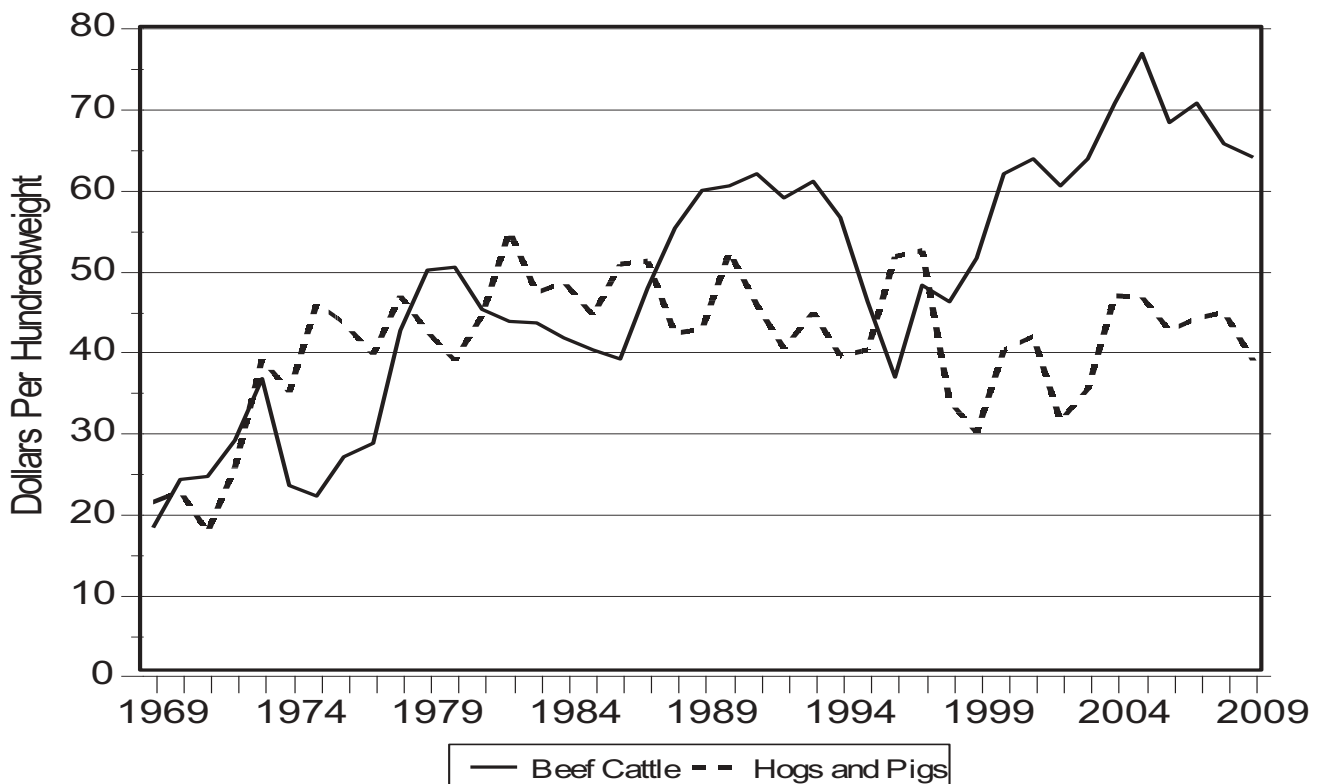
<sup>2</sup> Excludes milk sucked by calves.

### Number of Licensed Dairy Herds, by Selected States and United States, 2008-2009

State	Licensed Dairy Herds <sup>1</sup>	
	2008	2009
	Number	
Alabama	65	65
California	1,905	1,820
Florida	140	140
Georgia	270	270
Illinois	960	850
Louisiana	200	180
<b>Mississippi</b>	<b>160</b>	<b>140</b>
Missouri	1,760	1,740
North Carolina	300	290
Oklahoma	310	270
South Dakota	490	425
Tennessee	550	530
Texas	670	650
Virginia	725	715
United States	57,127	54,942

<sup>1</sup> Average number of dairy farms licensed to sell milk, based on counts collected from State and other regulatory agencies.

### Mississippi Prices Received for Beef Cattle and Hogs and Pigs, 1969-2009



## Mississippi Sorghum County Estimates, 2008-2009

County	Planted All Purposes		Harvested for Grain		Yield Per Acre		Production	
	2008	2009	2008	2009	2008	2009	2008	2009
	Acres				Bushels			
Bolivar	12,500	---	12,300	---	68.0	---	836,400	---
Quitman	12,200	---	12,100	---	73.0	---	883,300	---
Tunica	10,700	---	10,100	---	78.0	---	787,800	---
Other Counties	8,100	4,400	8,100	3,400	61.0	68.0	495,500	232,500
District 10	43,500	4,400	42,600	3,400	70.0	68.0	3,003,000	232,500
Panola	2,400	---	2,400	---	76.0	---	182,400	---
Other Counties	5,300	3,000	5,200	2,800	61.0	63.0	315,300	177,500
District 20	7,700	3,000	7,600	2,800	65.0	63.0	497,700	177,500
District 30	1,900	<sup>1</sup>	1,600	<sup>1</sup>	67.0	<sup>1</sup>	107,600	<sup>1</sup>
Sharkey	4,200	---	4,100	---	72.0	---	295,200	---
Sunflower	9,500	---	9,300	---	91.0	---	846,300	---
Washington	7,900	---	7,500	---	67.0	---	502,500	---
Yazoo	1,600	---	1,600	---	65.0	---	104,000	---
Other Counties	5,100	---	4,800	---	69.0	---	329,000	---
District 40	28,300	<sup>1</sup>	27,300	<sup>1</sup>	76.0	<sup>1</sup>	2,077,000	<sup>1</sup>
District 70	2,000	<sup>1</sup>	1,700	<sup>1</sup>	47.0	<sup>1</sup>	79,800	<sup>1</sup>
Other Districts	1,600	5,600	1,200	4,800	47.0	75.0	56,900	360,000
State Total	85,000	13,000	82,000	11,000	71.0	70.0	5,822,000	770,000

--- Included in Other Counties.

<sup>1</sup> Included in Other Districts.

## Farm-Raised Catfish: Imports and Exports, United States, 2008-2009

Month	Imports <sup>1</sup>				Exports <sup>1</sup>			
	Ictalurus spp.		Total <sup>2</sup>		Fresh		Frozen	
	2008	2009	2008	2009	2008	2009	2008	2009
	1,000 Pounds				1,000 Pounds			
January	2,944	2,344	9,666	9,819	134.6	87.0	23.1	0.0
February	2,575	1,225	9,603	6,527	71.6	65.1	0.0	0.0
March	2,040	972	7,884	8,942	106.3	65.1	11.9	50.6
April	3,040	1,364	10,492	8,548	72.3	47.5	1.2	12.8
May	2,864	1,659	10,151	11,592	57.0	79.1	0.0	14.2
June	1,758	1,088	11,299	10,577	71.0	63.8	10.9	21.4
July	1,202	1,849	8,674	10,765	52.1	68.6	14.6	20.5
August	1,315	1,210	6,994	11,711	62.9	91.8	12.0	12.4
September	987	1,385	6,462	12,541	62.6	50.6	3.5	17.7
October	579	1,584	7,188	13,857	74.6	138.0	8.0	43.4
November	1,374	2,144	6,198	12,783	122.6	59.1	1.2	30.2
December	2,425	2,527	7,817	11,718	74.4	63.1	7.3	56.3
Total	23,103	19,351	102,428	129,380	962.0	878.8	93.7	279.5

<sup>1</sup> Data compiled by the U.S. Census Bureau.

<sup>2</sup> Includes freshwater imports for consumption of *Ictalurus* spp., *Pangasius* spp., and other catfish of the order Siluriformes.

## Mississippi Soybean County Estimates, 2008-2009

County	Planted		Harvested for Beans		Yield Per Acre		Production	
	2008	2009	2008	2009	2008	2009	2008	2009
	Acres				Bushels			
Bolivar	219,000	248,000	214,500	240,000	42.0	42.0	9,014,000	10,080,000
Coahoma	139,000	129,000	136,600	124,700	43.0	45.0	5,869,500	5,611,500
Quitman	76,500	84,800	73,200	83,200	34.0	36.0	2,498,800	2,995,200
Tallahatchie	133,000	135,500	132,300	130,100	41.5	42.0	5,486,300	5,464,200
Tunica	101,500	122,500	100,600	119,500	43.0	39.0	4,325,800	4,660,500
District 10	669,000	719,800	657,200	697,500	41.5	41.5	27,194,400	28,811,400
Benton	12,800	14,700	12,400	14,100	32.0	35.0	396,800	493,500
Calhoun	18,800	22,100	18,400	19,400	38.0	32.0	699,200	620,800
Desoto	36,500	44,000	36,400	42,700	33.0	42.0	1,201,200	1,793,400
Marshall	22,700	25,500	22,600	23,400	33.5	39.0	757,100	912,600
Panola	55,900	49,900	54,400	46,000	40.0	32.0	2,176,000	1,472,000
Tate	21,500	23,000	21,400	21,000	36.5	41.0	781,100	861,000
Yalobusha	8,000	6,600	7,750	6,000	45.0	30.5	349,000	183,000
Other Counties	12,800	14,200	12,750	11,400	34.0	33.0	435,500	375,300
District 20	189,000	200,000	186,100	184,000	36.5	36.5	6,795,900	6,711,600
Alcorn	13,200	14,300	13,100	13,700	37.0	31.0	484,700	424,700
Itawamba	13,800	---	13,800	---	40.0	---	552,000	---
Lee	44,500	46,800	44,300	43,700	34.0	30.0	1,506,200	1,311,000
Pontotoc	22,300	25,600	22,200	23,400	35.0	34.0	777,000	795,600
Prentiss	21,300	23,500	21,200	21,400	31.0	33.0	657,200	706,200
Tippah	---	12,200	---	10,600	---	40.0	---	424,000
Union	19,100	22,000	19,000	19,600	33.0	32.0	627,000	627,200
Other Counties	13,800	17,100	13,700	15,300	31.0	31.5	424,700	482,200
District 30	148,000	161,500	147,300	147,700	34.0	32.5	5,028,800	4,770,900
Humphreys	80,800	88,800	77,400	80,100	35.0	28.0	2,709,000	2,242,800
Issaquena	45,000	51,400	44,800	47,400	32.0	35.0	1,433,600	1,659,000
Leflore	117,500	135,000	115,400	128,000	43.0	38.0	4,962,200	4,864,000
Sharkey	63,500	75,700	61,100	70,700	40.0	31.0	2,444,000	2,191,700
Sunflower	177,500	198,500	169,900	192,300	43.0	41.0	7,305,700	7,884,300
Washington	193,000	202,000	188,000	191,200	45.0	43.0	8,460,000	8,221,600
Yazoo	65,700	62,600	65,000	52,300	40.0	35.0	2,600,000	1,830,500
District 40	743,000	814,000	721,600	762,000	41.5	38.0	29,914,500	28,893,900
Attala	---	2,300	---	2,200	---	36.5	---	80,300
Carroll	12,500	15,000	12,500	13,000	48.0	28.0	600,000	364,000
Holmes	44,000	43,200	43,600	41,000	47.0	27.0	2,049,200	1,107,000
Madison	17,000	15,400	16,600	12,100	42.0	37.0	697,200	447,700
Montgomery	3,400	2,800	3,300	2,500	42.0	38.0	138,600	95,000
Rankin	4,400	5,000	4,400	4,300	46.0	37.0	202,400	159,100
Webster	2,300	2,300	2,300	1,500	38.0	38.0	87,400	57,000
Other Counties	3,400	4,000	3,400	3,400	48.5	27.5	164,300	93,300
District 50	87,000	90,000	86,100	80,000	46.0	30.0	3,939,100	2,403,400

Over

## Mississippi Soybean County Estimates, 2008-2009

County	Planted		Harvested for Beans		Yield Per Acre		Production	
	2008	2009	2008	2009	2008	2009	2008	2009
	Acres				Bushels			
Chickasaw	---	26,100	---	24,500	---	35.0	---	857,500
Lowndes	---	12,900	---	12,000	---	30.0	---	360,000
Monroe	37,000	34,500	36,500	33,600	33.0	34.0	1,204,500	1,142,400
Noxubee	28,100	26,300	28,000	23,600	36.0	31.0	1,008,000	731,600
Other Counties	47,900	10,700	47,100	9,600	31.5	27.5	1,473,800	263,100
District 60	113,000	110,500	111,600	103,300	33.0	32.5	3,686,300	3,354,600
Claiborne	---	3,200	---	3,000	---	46.0	---	138,000
Hinds	7,700	8,600	7,600	7,300	42.5	37.0	321,800	270,100
Warren	---	20,100	---	17,200	---	42.0	---	722,400
Other Counties	31,100	19,000	30,600	17,300	37.0	42.0	1,128,700	727,700
District 70	38,800	50,900	38,200	44,800	38.0	41.5	1,450,500	1,858,200
Covington	---	1,800	---	1,100	---	29.0	---	31,900
Lawrence	---	2,500	---	2,500	---	40.0	---	100,000
Walthall	---	1,100	---	1,000	---	31.0	---	31,000
Other Counties	<sup>1</sup>	3,100	<sup>1</sup>	2,400	<sup>1</sup>	32.5	<sup>1</sup>	77,500
District 80	8,700	8,500	8,500	7,000	33.0	34.5	279,900	240,400
District 90	3,500	4,800	3,400	3,700	32.5	26.0	110,600	95,600
State Total	2,000,000	2,160,000	1,960,000	2,030,000	40.0	38.0	78,400,000	77,140,000

--- Included in Other Counties.

<sup>1</sup> In 2008 , the District Total accounted for "Other Counties".

## Mississippi Top Ten Soybean Producing Counties, 2009

County	Planted All Purposes	Harvested for Beans	Yield Per Acre	Production
	Acres		Bushels	
Bolivar	248,000	240,000	42.0	10,080,000
Washington	202,000	191,200	43.0	8,221,600
Sunflower	198,500	192,300	41.0	7,884,300
Coahoma	129,000	124,700	45.0	5,611,500
Tallahatchie	135,500	130,100	42.0	5,464,200
Leflore	135,000	128,000	38.0	4,864,000
Tunica	122,500	119,500	39.0	4,660,500
Quitman	84,800	83,200	36.0	2,995,200
Humphreys	88,800	80,100	28.0	2,242,800
Sharkey	75,700	70,700	31.0	2,191,700

**Cattle: Marketing Year Average Prices Received by Farmers,  
by Selected States and United States, 2008-2009**

State	Cows <sup>1</sup>		Steers & Heifers		All Beef <sup>2</sup>		Calves	
	2008	2009	2008	2008	2009	2009	2008	2009
Dollars per Cwt								
Alabama	49.90	42.30	85.00	79.00	73.40	67.20	98.80	88.50
California	43.70	42.80	92.90	84.60	72.90	64.80	102.00	100.00
Florida	52.10	43.90	85.80	81.50	70.70	67.30	98.90	93.70
Georgia	54.30	47.80	85.90	81.60	66.20	61.60	96.30	94.70
Illinois	52.80	45.20	93.60	83.90	92.80	83.10	102.00	97.40
Louisiana	50.30	42.70	88.60	82.90	62.60	55.50	99.50	93.20
<b>Mississippi</b>	<b>49.50</b>	<b>44.80</b>	<b>86.00</b>	<b>80.30</b>	<b>65.50</b>	<b>63.90</b>	<b>94.30</b>	<b>90.70</b>
Missouri	49.40	43.70	98.40	92.70	86.20	80.60	108.00	105.00
North Carolina	53.50	47.20	87.50	82.00	65.50	61.40	94.80	89.30
Oklahoma	53.20	46.40	97.60	90.20	94.20	86.70	111.00	105.00
South Dakota	52.90	47.40	98.90	90.40	91.30	87.40	111.00	111.00
Tennessee	49.90	42.80	89.30	85.50	73.60	68.30	97.10	93.80
Texas	47.90	41.40	94.60	85.70	90.20	81.10	110.00	104.00
Virginia	49.80	43.00	87.50	84.50	75.30	71.40	97.50	93.70
United States	50.60	44.80	94.50	85.40	89.10	80.30	110.00	103.00

<sup>1</sup> Beef cows and cull dairy cows sold for slaughter.

<sup>2</sup> "Cows" and "Steers and Heifers" combined.

**Hogs: Marketing Year Average Prices Received by Farmers,  
by Selected States and United States, 2008-2009**

State	Barrows and Gilts		Sows		All Hogs and Pigs	
	2008	2009	2008	2008	2008	2009
Dollars per Cwt						
Alabama	45.30	42.60	30.10	40.90	43.80	41.70
California	48.50	42.50	29.30	34.50	48.00	42.30
Florida	44.50	41.80	29.60	31.00	39.40	37.40
Georgia	49.70	46.90	30.10	40.90	46.60	45.00
Illinois	49.80	45.30	26.30	33.60	47.90	44.40
Louisiana	43.90	37.50	26.30	31.60	38.60	35.70
<b>Mississippi</b>	<b>44.80</b>	<b>38.70</b>	<b>30.60</b>	<b>36.10</b>	<b>44.70</b>	<b>38.70</b>
Missouri	42.70	36.90	28.50	34.80	41.50	36.80
North Carolina	48.70	41.80	29.60	41.20	48.50	41.70
Oklahoma	40.00	34.90	26.10	34.30	37.90	34.80
South Dakota	49.30	42.80	28.50	33.30	46.80	41.70
Tennessee	46.00	40.00	30.00	36.00	44.40	39.60
Texas	43.80	41.10	26.10	28.70	40.50	37.60
Virginia	46.20	44.20	31.30	40.00	45.50	43.90
United States	47.90	42.00	29.20	36.10	47.00	41.70

## Chicken Eggs in Incubators, by Region and United States, February 1, 2009-2010

Region	Broiler-type			Egg-type		
	2009	2010	2010/2009	2009	2010	2010/2009
	1,000		Percent	1,000		Percent
North Atlantic	11,811	11,485	97	5,222	4,945	95
East North Central	11,436	12,570	110	7,037	7,687	109
West North Central	27,937	27,783	99	8,482	8,657	102
South Atlantic	232,117	230,539	99	4,186	4,876	116
South Central	318,343	323,696	102	5,625	5,957	106
West	21,940	21,731	99	4,646	7,216	155
United States	623,584	627,804	101	35,198	39,338	112

## January Layers and Egg Production, by Selected States and United States, 2009-2010

State	All Layers on Hand		Table Eggs		Hatching Eggs	
	2009	2010	2009	2010	2009	2010
	1,000			Million Eggs		
Alabama	9,405	9,170	32	27	148	148
Arkansas	12,923	12,299	87	78	170	165
Florida	10,173	10,153	225	228	5	5
Georgia	18,303	17,702	215	215	169	169
<b>Mississippi</b>	<b>5,967</b>	<b>6,162</b>	<b>37</b>	<b>35</b>	<b>84</b>	<b>87</b>
North Carolina	12,638	13,183	134	144	130	133
South Carolina	4,486	4,477	72	72	24	22
Virginia	3,003	3,311	32	27	29	40
United States	341,400	339,173	6,603	6,610	1,075	1,082

## January Broiler-Type Chicks Hatched, by Selected States and United States, 2009-2010

State	During January			January-January		
	2009	2010	2010/2009	2009	2010	2010/2009
	1,000		Percent	1,000		Percent
Alabama	108,270	109,127	101	108,270	109,127	101
Arkansas	90,672	89,402	99	90,672	89,402	99
Florida	3,871	4,647	120	3,871	4,647	120
Georgia	121,074	114,428	95	121,074	114,428	95
<b>Mississippi</b>	<b>65,269</b>	<b>69,750</b>	<b>107</b>	<b>65,269</b>	<b>69,750</b>	<b>107</b>
North Carolina	69,749	68,897	99	69,749	68,897	99
South Carolina	20,111	20,172	100	20,111	20,172	100
Virginia	22,121	22,468	102	22,121	22,468	102
United States	778,401	775,615	100	778,401	775,615	100

Commercial Red Meat Production: by Selected States and United States <sup>1</sup>

	January 2009	December 2009	January 2010	January 2010 as Percent of 2009 <sup>2</sup>
	Million Pounds			Percent
Alabama	1.8	1.9	1.8	98
Arkansas	5.5	5.2	4.8	87
Florida	8.3	9.3	8.9	107
Georgia	12.0	10.6	11.4	94
Kentucky	48.7	54.4	45.3	93
Louisiana	0.5	0.5	0.4	92
<b>Mississippi</b>	<b>1.4</b>	<b>2.5</b>	<b>1.8</b>	<b>131</b>
Missouri	155.8	143.3	140.8	90
North Carolina	220.2	229.6	209.1	95
Oklahoma	99.5	98.4	89.6	90
South Carolina	20.1	22.0	19.8	99
Tennessee	20.8	19.7	17.4	84
Texas	414.8	414.8	385.7	93
Virginia	44.0	46.3	35.4	81
West Virginia	0.8	0.9	0.8	101
United States	4,169.7	4,147.5	3,916.4	94

<sup>1</sup> Includes total beef, veal, pork, lamb, and mutton.<sup>2</sup> Percentages based on unrounded data.