



Seminole County Extension
207 E. Crawford St.
Donalsonville, Ga 39845

Phone: (229) 524-2326
Fax: (229) 524-2856
E-mail: ethredge@uga.edu
<http://www.ugaextension.com/seminole>

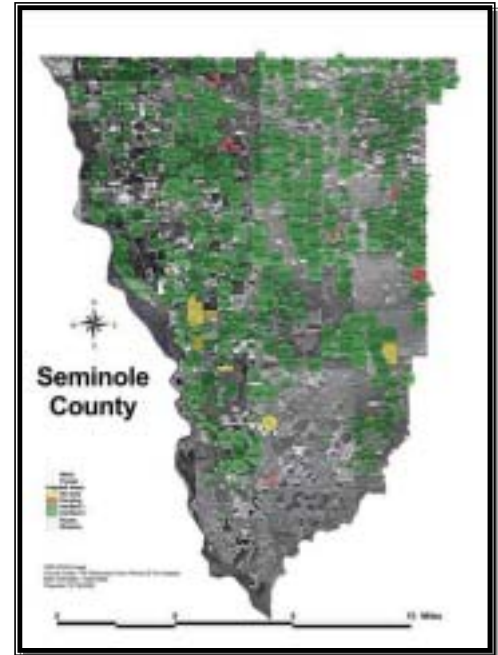
Seminole Crop E news

March 5, 2010

Farmers and Agribusiness:

Finally able to break some land. On Monday folks were very busy as it had dried off enough to get some real work done. Sure enough though, we got an inch of rain that night. Peanuts will be planted in this field in May.

Aerial Applicator Fly-in will be this Thursday March 11 at the Donalsonville Airport and Seminole County Cotton Production Meeting will be the next Monday Mar 15 at 11 am.



****The South Florida Beef-Forage Program - 2010 Reproductive Management School****

The 2010 Reproductive Management School sponsored by the Florida Cooperative Extension Service and South Florida Beef- Forage Program will be held April 13-15 at the DeSoto County Turner Center in Arcadia.

The purpose of the course is to strengthen managerial capabilities of owners and operators of beef cattle ranches. It is hoped that an improved understanding of the broad subject of breeding herd management will be achieved and that individuals enrolled in the course will be better equipped to work with their veterinarians in accomplishing breeding program objectives.

For information concerning fees, complete agenda, etc., please connect to www.tifton.uga.edu/pc-web OR simply click on the following link:

[April 13-15, 2010 - South Florida Beef Forage Program- Arcadia](#)

Cold, wet, hot and dry spring

By David E. Stooksbury (State climatologist, a professor of engineering and graduate coordinator for atmospheric sciences in the University of Georgia College of Agricultural and Environmental Sciences.

Georgia's spring weather this year will be the tale of two seasons: The most likely scenario is cooler and wetter than normal early on, becoming hotter and drier leading into summer.

Climatological spring started March 1. March is historically the wettest month in Georgia. Many locations can expect 5 inches of rain or more this month. Heavy snowfall across the northern half of Georgia during March isn't uncommon. Ice storms remain a threat.

Because of the expected below-normal temperatures, high heating demand for buildings will likely continue through this month and into April.

For the Coastal Plain, there is a high probability that this region will receive above-normal rainfall through early spring. This means the risk for flooding across south Georgia will remain high. Agricultural fields will be slow to dry for spring field work.

In general, there is a good probability that rainfall will be near normal across the Piedmont around Athens and Atlanta. But wetter conditions are expected in the southern Piedmont. Across the mountains, there is a good probability that early spring will be drier than normal.

By late spring, it is likely rainfall will be below normal statewide. May is traditionally one of the driest months.

Learning for Life

Agriculture and Natural Resources · Family and Consumer Sciences · 4-H Youth

ugaextension.com

An Equal Opportunity / Affirmative Action Institution

Late spring should be warmer

Temperatures will likely become warmer than normal by late spring. With less rain, temperatures in the 80s and increased water demand by plants, soils can dry out very quickly in May.

Spring is a transition season. Severe weather is more likely during the spring.

Up-to-date weather information is available at the University of Georgia Automated Weather Station Network Web site www.georgiaweather.net. Historical data is available at the Georgia State Climatology Office Web site climate.engr.uga.edu.

This and other good UGA articles are found at <http://georgiafaces.caes.uga.edu/index.cfm>.



Mike Miller of Dollar Family Farms takes a good look at the growth on some wheat planted for a cover crop behind corn under this pivot. He said we need some continued dry weather for field operations to get back on schedule.

Support for Extension and 4H

Thanks for all the emails, calls, letters and facebook messages supportive of Extension and 4H. Thanks to our local supportive leaders and legislators and other helpful folks as well. I'm thankful for county government, this is a good place to live and work.

It looks now like we won't be unfairly singled out and things are looking better at this point. The fact still remains that we are down some 80 county agents in Georgia and have received a

20% state budget cut over 2 years, things are tough in some areas of the state as we can't hire agents to replace those that retire or leave.



4-H'er Hunter Womble is here showing his steer at the State show in Perry a few weeks ago. Tomorrow (Sat. Mar 6) is our local Steer and Heifer show here in Seminole County at 1 pm at the Ag Center.

Abigail Meadows, Seminole County 4H'er, is digging in her Grampa's worm bed in preparation for some weekend fishing. It is full of good red wigglers. She's been working on her 4-H Project Achievement speech concerning wildlife.



Learning for Life

Agriculture and Natural Resources · Family and Consumer Sciences · 4-H Youth

ugaextension.com

An Equal Opportunity / Affirmative Action Institution

Variety Info

I've had some requests this week for more variety info.

Here's the link to UGA info:

UGA Statewide Variety Test data for 2009 and before is available at: www.swvt.uga.edu

Dr. Jim Bostick, Executive Vice President of Alabama Crop Improvement Association has provided an internet link to the 2009 Peanut Variety Test Report for Alabama. It is at the following link:

www.ag.auburn.edu/aaes/communications/peanuts

Question of the Week

Last week I asked about why a wheat field showed widely but evenly spaced green streaks. I had many correct answers and Jimmy Clements, aka head wheat guru, probably had the best answer, "6 row peanut picker with peanut hay giving Nitrogen (and organic matter) so the wheat can tiller (and grow) more".

This week's question is about a field I went to this week that had wheat and oats mixed growing in it and my question is what is in the center of the photo and why?



Later,
Rome

Rome Ethredge
Seminole County Extension Agent