



United States Department of Agriculture
National Agricultural Statistics Service
Crop Production Report

Released October 9, 2009



Cooperating with the University of Arkansas – Division of Agriculture
10800 Financial Centre Parkway, Suite 110 · Little Rock, Arkansas 72211
(501) 228-9926 · (501) 224-5630 FAX · www.nass.usda.gov

This report contains the results from the *2009 October Ag Yield* and *Objective Yield Surveys*. The data are also posted on our Web site at <http://www.nass.usda.gov/ar> and in a more detailed report at the Internet address above. Thanks to all who responded to the questionnaires and interviews for these surveys, and to those cotton and soybean producers who allowed objective measurements to be taken in their fields.

**2009 Soybean Yield Could Tie Record High
Third Largest Corn Crop and Second Largest Soybean Crop in Arkansas History Forecasted
Second Highest Sorghum Yield Forecasted but Smallest Sorghum Production since 1958 Forecasted**

Corn: Arkansas corn planted area is 430,000 acres, up 20,000 acres from June 2009 but down 10,000 acres from last year. Corn for grain production for the state is forecast at 62.7 million bushels, down 6 percent from 2008. Based on conditions as of October 1, yield is expected to average 153 bushels per acre, unchanged from last month's forecast but down 2 bushels from last year. If realized, both production and yield will be the third largest on record. Producers expect to harvest 410,000 acres of corn for grain, up 5 percent from last month but down 5 percent from 2008.

Cotton: All cotton production is forecast at 1.08 million 480-pound bales, down 2 percent from the September 1 forecast and down 17 percent from last year. Yield is expected to average 1,037 pounds per harvested acre, down 19 pounds from last month's forecast, but up 25 pounds from 2008. Harvested area is estimated at 500,000 acres, down 19 percent from 2008.

Hay: All hay production, excluding alfalfa, is forecast at 3.08 million tons, up 1 percent from 2008. Based on conditions as of October 1, 2009, yield is expected to average 2.2 tons per acre, unchanged from the August 1 forecast and unchanged from last year. Producers expect to harvest 1.4 million acres of all hay, excluding alfalfa, up 1 percent from 2008.

Rice: The 2009 total rice production for the state is forecast at 101 million hundredweight (cwt), unchanged from the September 1 forecast but up 9 percent from last year's production. Based on conditions as of October 1, the all rice yield for 2009 is forecast at 6,850 pounds per acre, unchanged from the September 1 forecast but up 190 pounds from last year's yield. Producers expect to harvest 1.48 million acres of rice, up 6 percent from 2008.

Sorghum: Arkansas sorghum planted area is 40,000 acres, down 15,000 acres from June 2009 and down 85,000 acres from 2008. Sorghum for grain production in 2009 is forecast at 3.26 million bushels, down 22 percent from the September 1 forecast and down 68 percent from a year ago. This is the smallest sorghum for grain production since 1958. Based on October 1 conditions, yield is expected to average 93 bushels per acre, unchanged from the September 1 forecast but up 5 bushels per acre from last year. If realized, this will be the second highest yield on record, behind only the 2007 record yield of 96 bushels. Area harvested for grain, at 35,000 acres, is down 22 percent from June 2009 and down 70 percent from 2008.

Soybeans: Arkansas soybean planted area is estimated at 3.42 million acres, up 20,000 acres from June 2009 and up 4 percent from 2008. Soybean production for Arkansas in 2009 is forecast at 131 million bushels, up 6 percent from a year ago. If realized, this will be the largest soybean crop since 1979 and the second largest in Arkansas history. Based on October 1 conditions, yield is expected to average 39 bushels per acre, up a bushel from last month's forecast and last year. If realized, this will match the highest yield on record, set in 2004. Area for harvest, at 3.37 million acres, is up 4 percent from 2008.

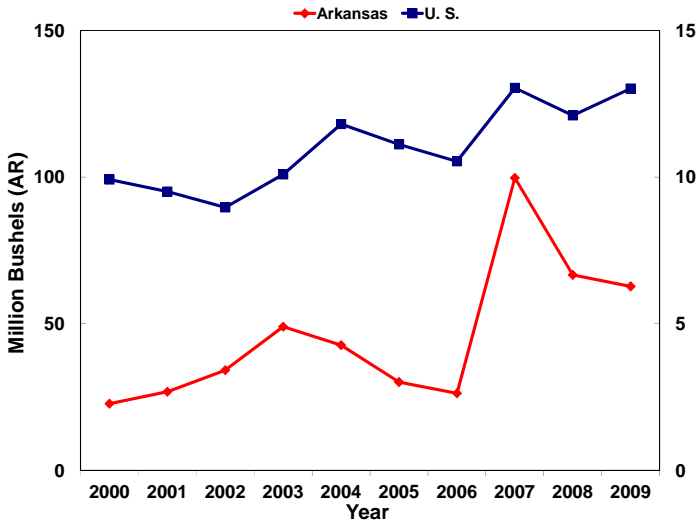
**Area Harvested, Yield, and Production,
Arkansas and U.S., 2008 and Forecasted October 1, 2009**

Crop	Unit	Area Harvested		Yield		Production	
		2008	2009	2008	2009	2008	2009
		1,000 Acres		Per Acre		1,000 Units	
Arkansas							
Corn for Grain	Bushels	430	410	155.0	153.0	66,650	62,730
Cotton, All	¹	615.0	500.0	1,012	1,037	1,296.0	1,080.0
Hay, excluding Alfalfa	Tons	1,390	1,400	2.20	2.20	3,058	3,080
Rice, All	²	1,395	1,475	6,660	6,850	92,938	101,038
Sorghum for Grain	Bushels	115	35	88.0	93.0	10,120	3,255
Soybeans for Beans	Bushels	3,250	3,370	38.0	39.0	123,500	131,430
United States							
Corn for Grain	Bushels	78,640	79,294	153.9	164.2	12,101,238	13,018,058
Cotton, All	¹	7,568.7	7,732.2	813	807	12,815.3	12,998.0
Hay, excluding Alfalfa	Tons	39,082	39,195	1.95	2.06	76,052	80,752
Rice, All	²	2,976	3,101	6,846	7,115	203,733	220,647
Sorghum for Grain	Bushels	7,271	5,681	65.0	64.0	472,342	363,723
Soybeans for Beans	Bushels	74,681	76,619	39.7	42.4	2,967,007	3,250,113

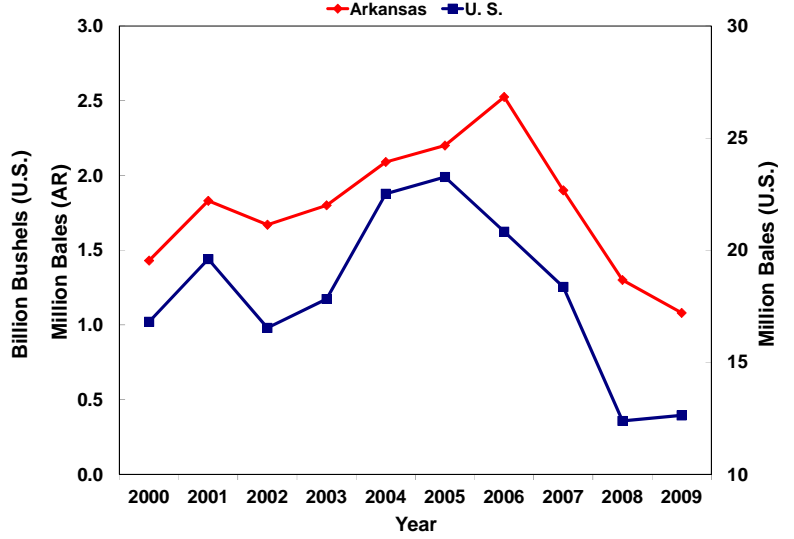
¹ Cotton yield is reported in pounds per acre and production is reported in 480 pound bales.

² Rice yield is reported in pounds and production is reported in hundredweight (cwt).

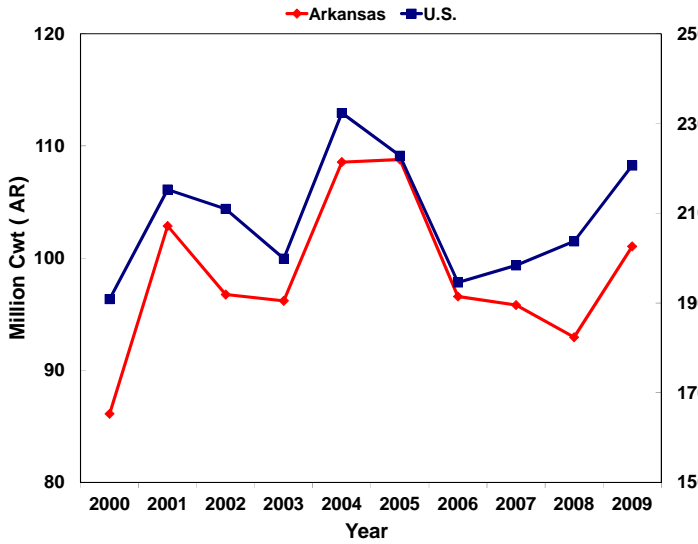
Corn Production, Arkansas and U.S., 2000-2009¹



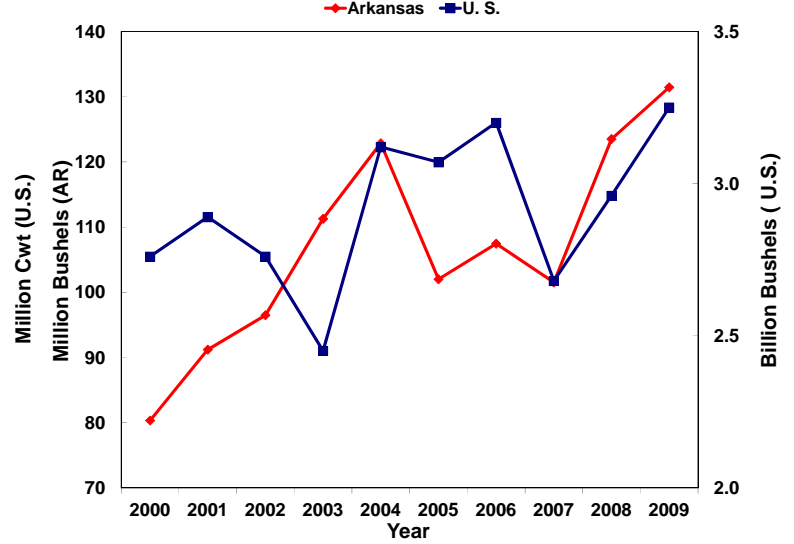
Upland Cotton Production, Arkansas and U.S., 2000-2009¹



Rice Production, Arkansas and U.S., 2000-2009¹



Soybean Production, Arkansas and U.S., 2000-2009¹



¹ Forecasted production for 2009 as of October 1, 2009.