



## Capture® LFR™ insecticide - a technical review

Capture® LFR™ insecticide from FMC has proven in test results to tank mix easily with liquid pop-up fertilizers. Studies show that ease of mixing and the ability to stay in solution improved with this product. Research shows that Capture LFR provides an even distribution through various spray systems studied, including the LiquidReady™ system.

- Studies show ease of tank mixing and new formula stays suspended in liquid fertilizers
- Data shows even distribution through liquid fertilizer solution
- Product performance trials show effectiveness against seed and seedling pests, in addition to corn rootworm
- Safe to corn seed when applied in furrow

### Product:

Capture® LFR™ insecticide – Corn at-plant tank mixed with liquid fertilizer or water.

### Spectrum of Activity: [target pests]

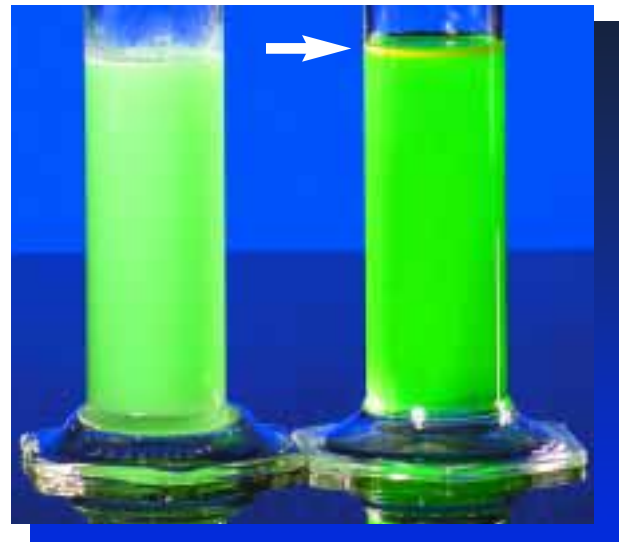
Corn seed and seedling pests: wireworm, cutworm, grubs, armyworm, seed corn maggot, common stalk borer and corn rootworm.

### Mode of Action:

Absorbed by the insect cuticle, through the spiracles or by ingestion, causes knockdown and paralysis, nerve control on the peripheral and central nervous system of the insect.

### Chemical Product Identification:

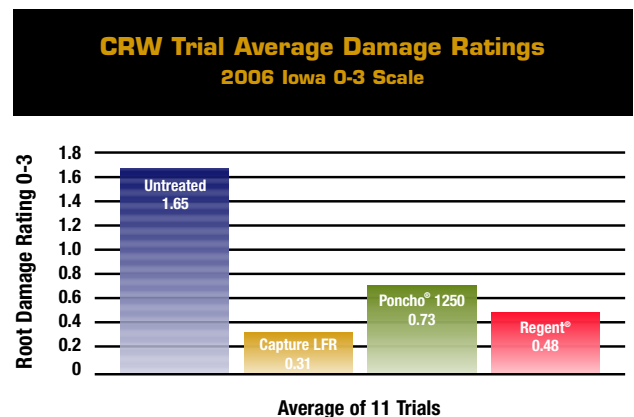
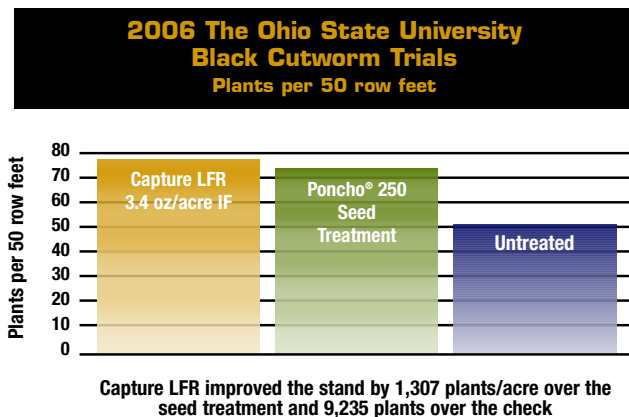
Product Use: In-furrow, at-plant, tank mixed with starter fertilizers or water.



Capture LFR dispersion (left) compared to EC insecticide formulation dispersion. Note that the EC formulation has separated and formed a visible band on top of the fertilizer mixture.

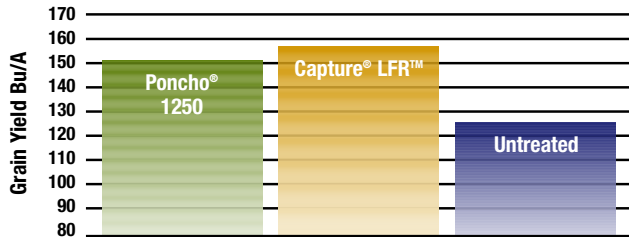
## The proof is in the performance.

### Improves Stands



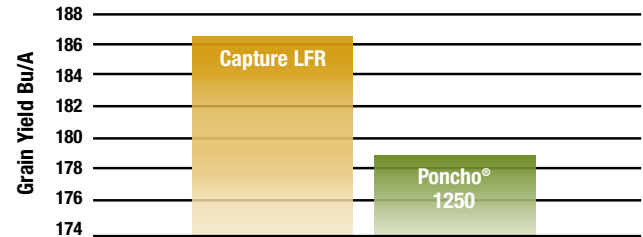
## Increases Yields

**2006 Iowa F.I.R.S.T. Trials  
Corn on Corn Sites**  
Yields (bu/A)



Average of four trials conducted in Wisconsin and Iowa by ABC Ag, Inc. using DeKalb<sup>®</sup> 60-17 hybrid

**Capture LFR vs. Seed Treatments  
2005 Large Plot Demo Trials**  
Grain Yields in Bu/A



Average of eight trials conducted in Kentucky, Indiana and Illinois

## Crop Use Information: Corn

**Seedling insects** - In-furrow tank mixed with starter fertilizer – research shows control on heavy infestations of wireworms and cutworms, plus other pests such as grubs, seed corn maggots, armyworms and stalk borers.

**Corn rootworm** - In-furrow tank mixed with starter fertilizer – for control of infestations of corn rootworms.

Pest	Dosage [oz/ac]	Dosage [lb ai/ac]	Remarks
Corn rootworm larvae (Northern, Southern and Western)	6.8 to 8.5	0.08 to 0.10	Apply as a 5-7 inch band (T-band) over an open furrow or in-furrow with the seed.
Wireworm Grubs Seed corn maggot Stalk borer Root aphid	3.4 to 6.8	0.04 to 0.08	Apply as a 5-7 inch band over an open furrow (T-band), or in-furrow with the seed.
Army cutworm Cutworm species True armyworm Armyworm species	3.4 to 6.8	0.04 to 0.08	Apply as a 5-7 inch band over the row on the soil surface, a 5-7 inch band over the open furrow (T-band), in-furrow with the seed, or broadcast over the entire acre on the soil surface.

For more information, please contact your FMC Star Retailer or FMC Retail Market Manager today.



### FMC Corporation

Agricultural Products Group  
1735 Market Street  
Philadelphia, PA 19103

1-888-59-FMC-AG • [cropsolutions.fmc.com](http://cropsolutions.fmc.com)

Always read and follow label directions.  
Capture LFR is a restricted use pesticide. Capture 2EC-CAL is registered for use in California.  
FMC, Capture, LFR and LiquidReady are trademarks of FMC Corporation.  
Poncho is a trademark of Bayer CropScience. Force is a trademark of a Syngenta Group Company.  
Regent is a trademark of BASF. DeKalb is a trademark of Monsanto Technology L.L.C.  
© 2007 FMC Corporation. All rights reserved. C527 FMC-1531 02/07

